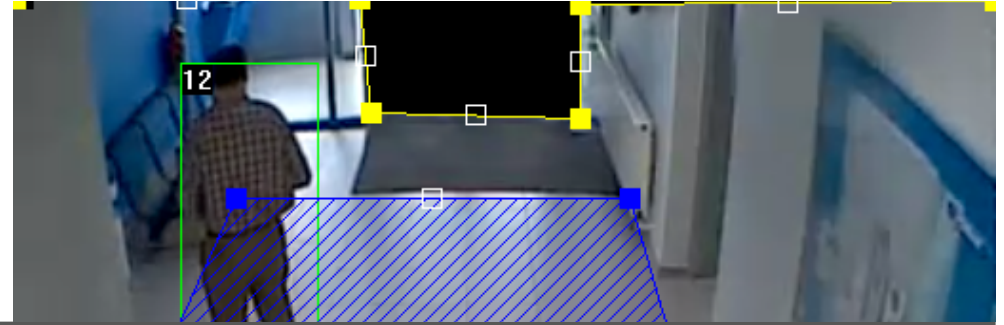


Today's security market demands highly sophisticated technologies, and Honeywell's innovative analytics solutions deliver the required functionality to solve customer problems. Honeywell's analytic capabilities increase security, reduce shrinkage, enhance customer service and increase operational efficiencies. Honeywell Video Analytics automatically detects, analyses, tracks and classifies the behaviours of people and vehicles as they move through a scene.

Video Analytics equip Cameras compatibility



	H2W2GR1	H3WXGRx	H3WXGR1V	H4D8GR1, HB08GR1, HCD8G	H4L6GR2	H4L2GR1V	H4WXGRx / H4L2GR1	H4WXGR1V	HBL6GR2	HBL2GR1V	HBWXGRx	HBWXGRxV	HCL2G / HCWXG	HCL2GV	HCW2GV	HCPB302, HEPB302W01Ax4	HDZ302Dxx	HDZ302Lix	HEPZ302W0	HFDxGR1	HM4L8GR1, HMBL8GR1	CATEGORY	
Audio detection	✓	✓	✓	✓	✓	✓	✓	✓	✓	✓	✓	✓	✓	✓	✓	✓	✓	✓	✓	✓	✓	✓	Cameras can be configured to detect sounds that are above a selected threshold ⁽⁴⁾ .
Auto-tracking																	✓	✓	✓				PTZ cameras can be configured to detect people or vehicles in the image and can follow the movement of the detected object automatically.
Face detection	✓	✓	✓	✓	✓	✓	✓	✓	✓	✓	✓	✓	✓	✓	✓	✓	✓	✓	✓	✓	✓	✓	Detects a human face moving towards it, triggering a response. The camera can only detect a face looking directly into the camera, not side views.
Heat Map						✓			✓				✓										It represents people motion traffic density in a specific area within a time period, using colors to display different densities of frequent traffic flow.
Intrusion	✓		✓					✓				✓			✓								Detects when intrusion occurs in a pre-defined area ⁽⁴⁾ .
Motion detection	✓	✓	✓	✓	✓	✓	✓	✓	✓	✓	✓	✓	✓	✓	✓	✓	✓	✓	✓	✓	✓	✓	Cameras can be configured to detect motion in the image ⁽⁴⁾ .
Object Abandoned	✓		✓			✓		✓		✓		✓	✓	✓	✓	✓	✓	✓	✓	✓	✓	✓	Cameras can be configured to detect any object abandoned in a predefined area beyond a set period of time ⁽⁴⁾ .
Object Missing	✓		✓			✓		✓		✓		✓	✓	✓	✓								Cameras can be configured to detect an object missing from a predefined area ⁽⁴⁾ .
People counting						✓	✓		✓	✓			✓										Cameras can be configured to count people entering and leaving thru a predefined line ⁽⁴⁾ .
Scene change	✓	✓	✓	✓	✓	✓	✓	✓	✓	✓	✓	✓	✓	✓	✓	✓	✓	✓	✓	✓	✓	✓	Cameras can be configured to trigger an alarm when there is a change in the scene caused by movement of the camera ⁽⁴⁾ .
SD Card full/failure	✓	✓	✓	✓	✓	✓	✓	✓	✓	✓	✓	✓	✓	✓	✓	✓	✓	✓	✓	✓	✓	✓	The installed microSD card is full / not working ⁽⁴⁾ .
Tripwire	✓		✓					✓				✓			✓								Detects people, vehicles and objects crossing a predefined line in the image ⁽⁴⁾ .
Video tampering	✓	✓	✓	✓	✓	✓	✓	✓	✓	✓	✓	✓	✓	✓	✓	✓	✓	✓	✓	✓	✓	✓	Cameras can detect when the lens is covered ⁽⁴⁾ .
Intrusion Detection ⁽¹⁾						✓			✓			✓											Improved detection of intrusion in a predefined area in the image ⁽⁴⁾ .
Loitering Detection ⁽¹⁾						✓			✓			✓											Improved detection of people loitering with in an area for a predefined period of time ⁽⁴⁾ .
Trigger Line Detection ⁽¹⁾						✓			✓			✓											Improved detection of people, vehicles and objects crossing a predefined line in the image ⁽⁴⁾ .
Xtralis IntrusionTrace™ ⁽²⁾				✓	✓			✓								✓	✓		✓	✓			Provides high performance intrusion detection using video analytics specifically designed for 24/365 low false alarms operation.
Xtralis LoiterTrace™ ⁽²⁾				✓	✓			✓									✓		✓	✓			Provides high performance Loiter detection using video analytics specifically designed for 24/365 low false alarms operation.
Xtralis VehicleTrace™ ⁽³⁾								✓															Detects and captures the image of license/number plate of a vehicle, convert the image into characters, then generate an event for MAXPRO NVR/VMS

(1) Open VA framework
 (2) Additional license application required. Firmware must be 30 March 2017 or later
 (3) MAXPRO NVR 4.9 minimum (consult us for availability in regions)

✓ Available on the Camera and MAXPRO NVRs
 ✓ Available on the Camera only

(4) A set of alarms can be triggered as configured.